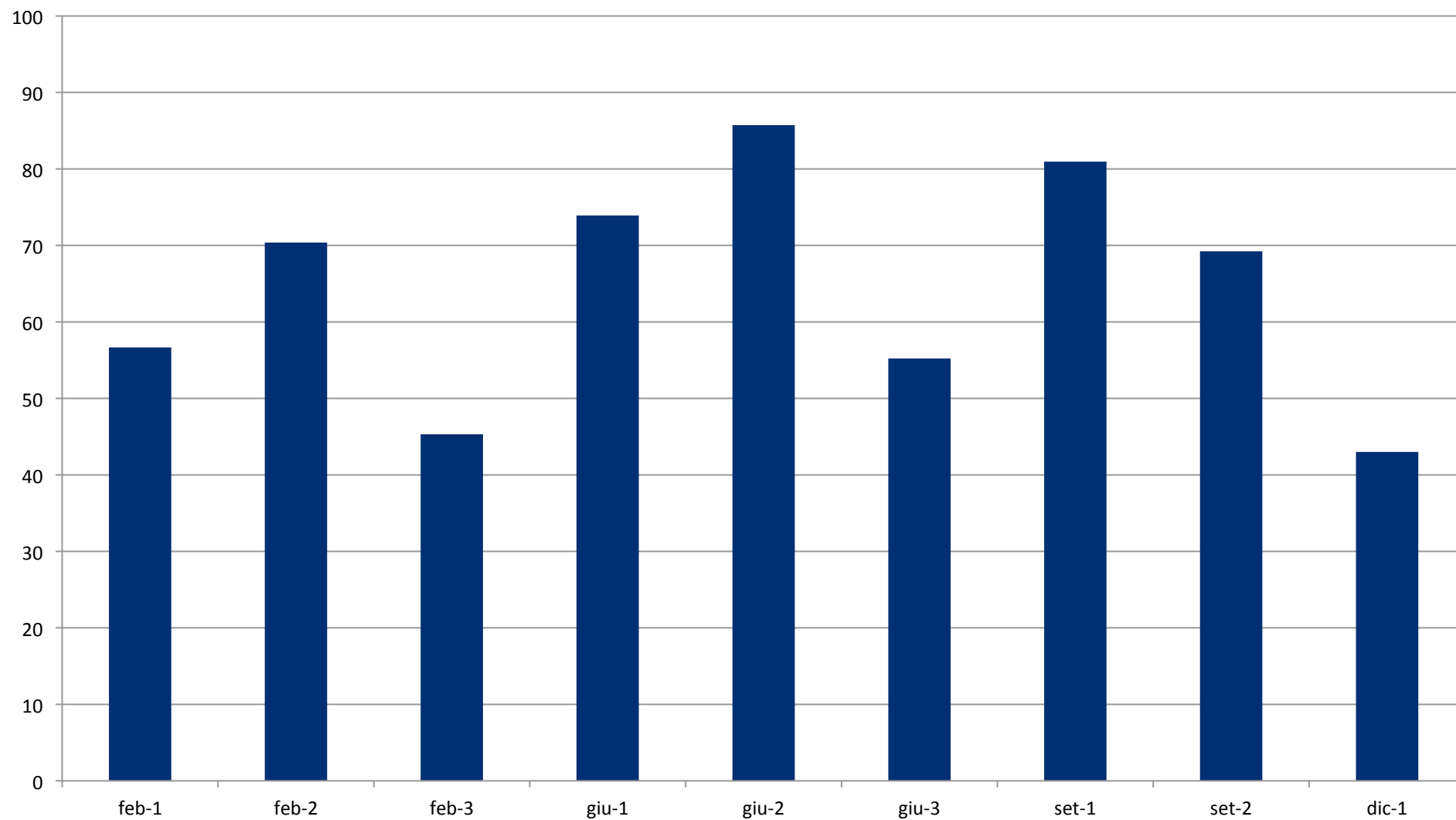


Università degli Studi di Parma
Corso di Laurea in
Medicina e Chirurgia

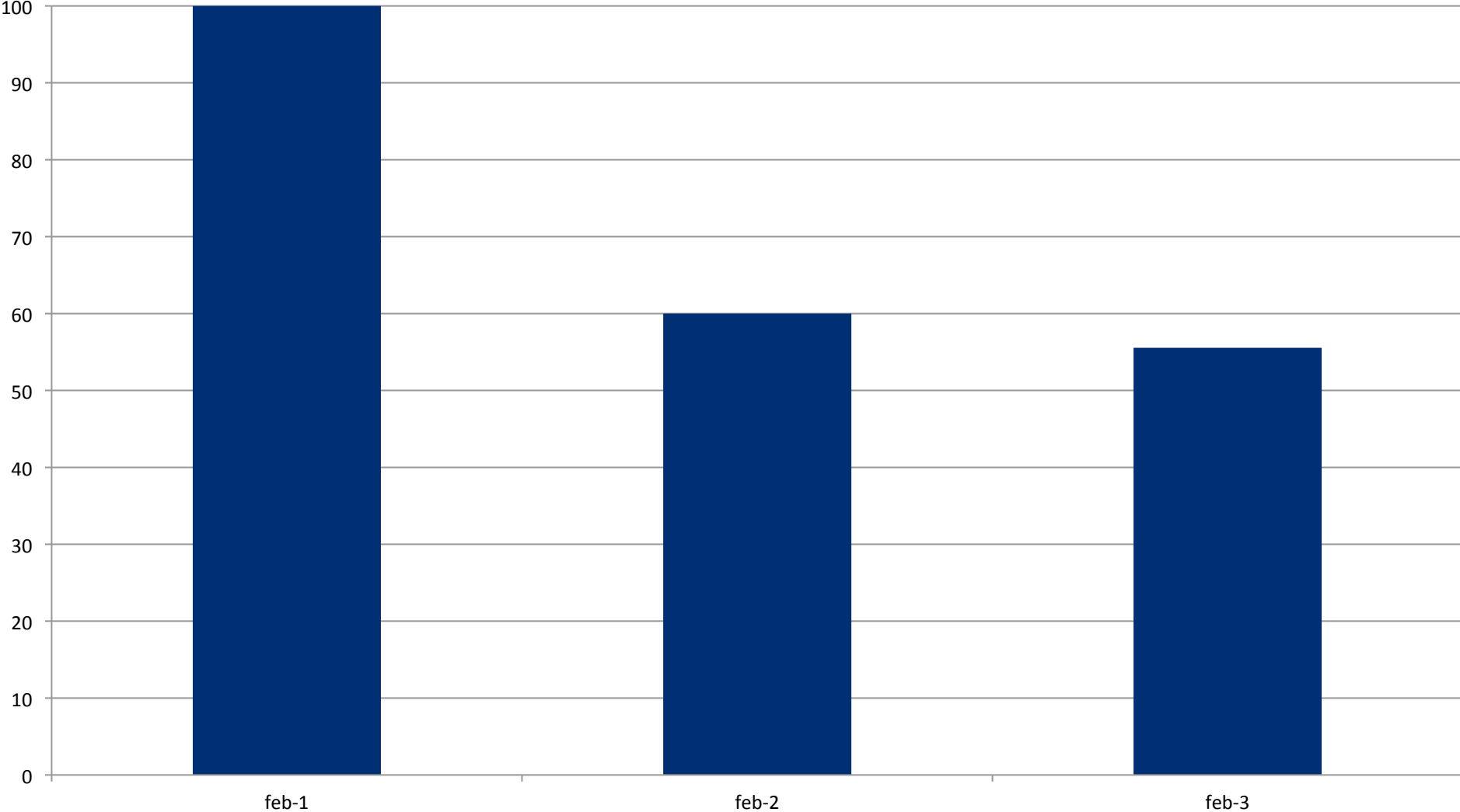
Superamento esami anno 2013
(rilevazione 16-1-2014)

I grafici sono in percentuale di superamento

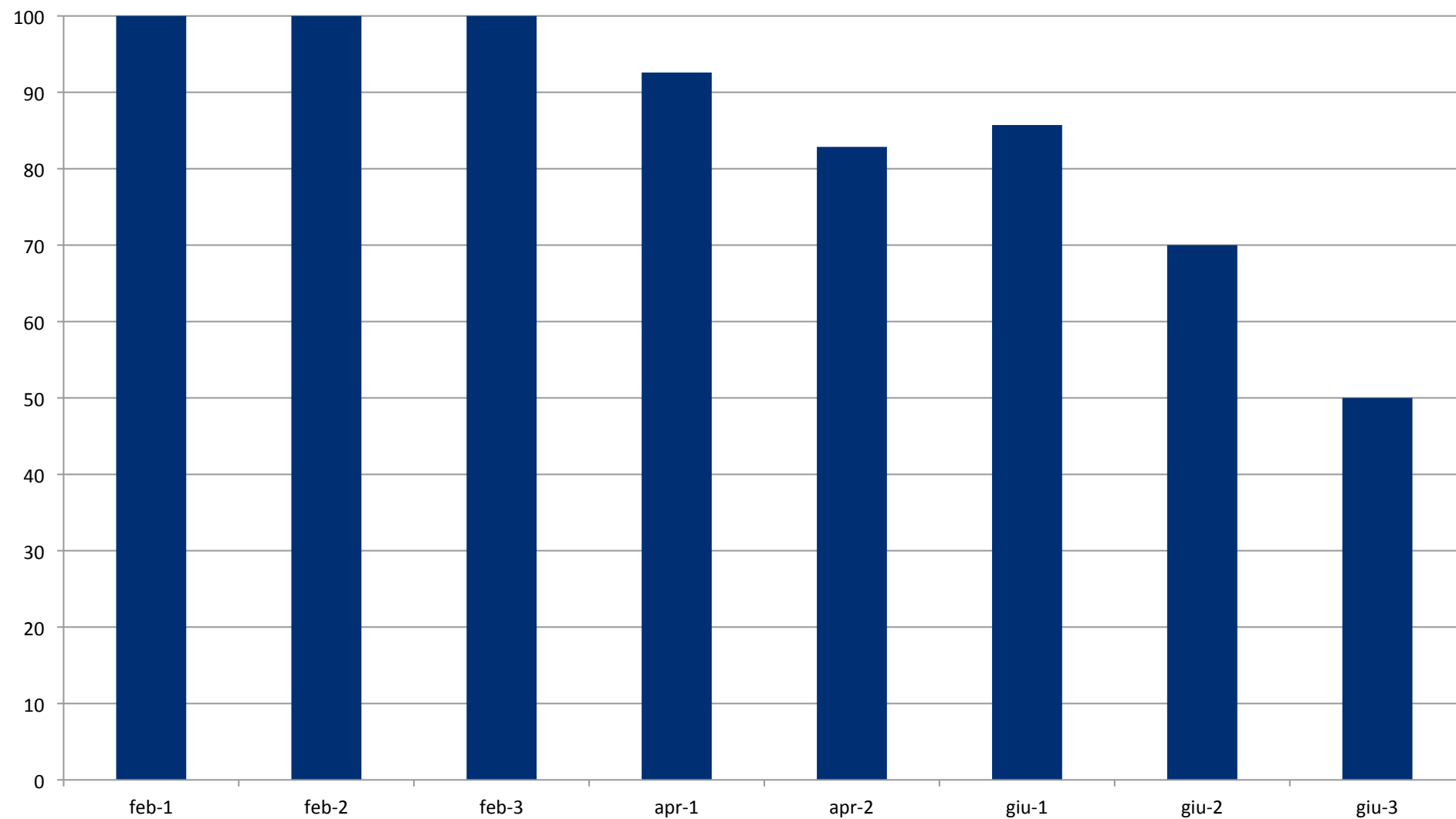
Biochimica



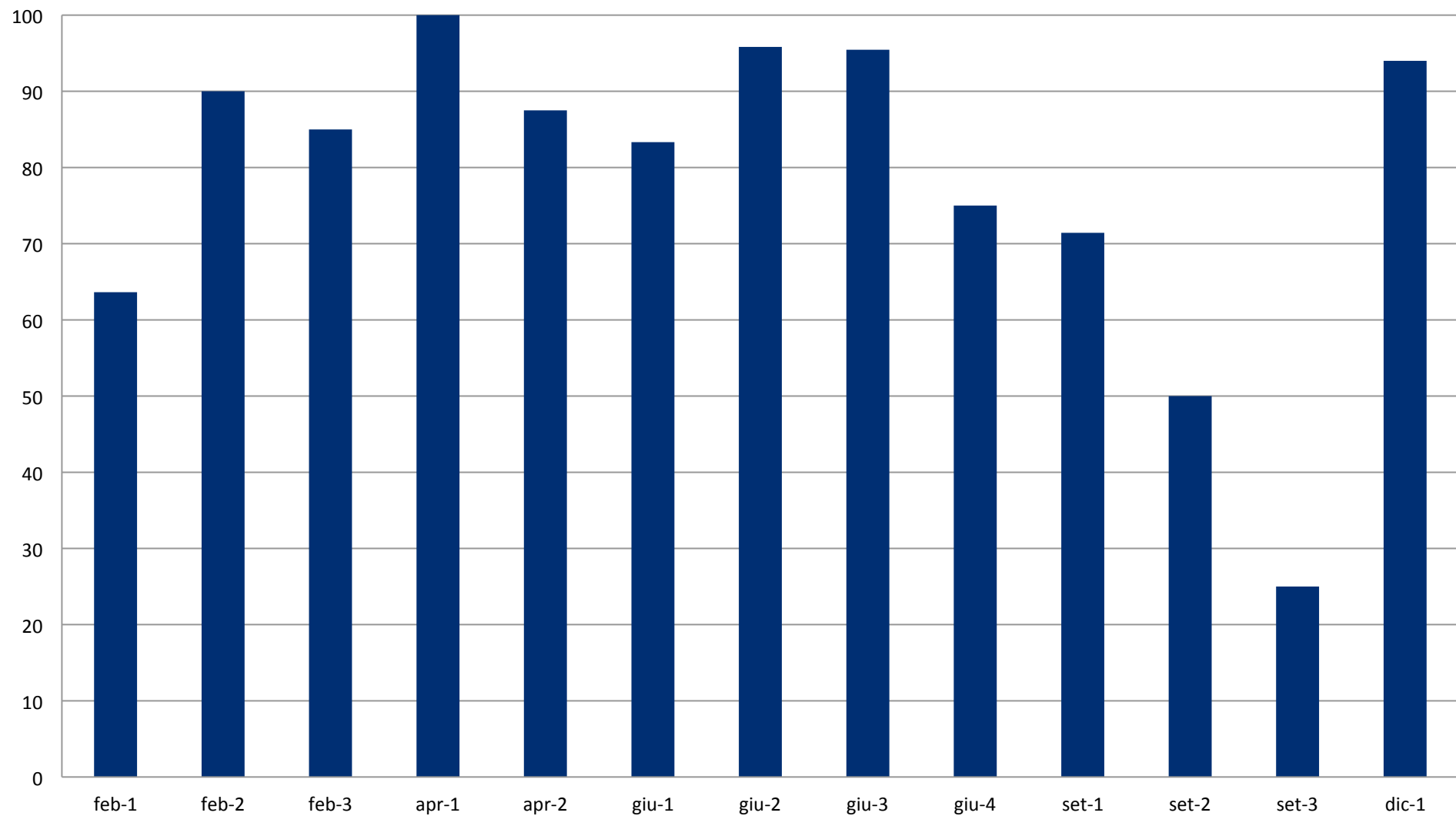
Clinica chirurgica



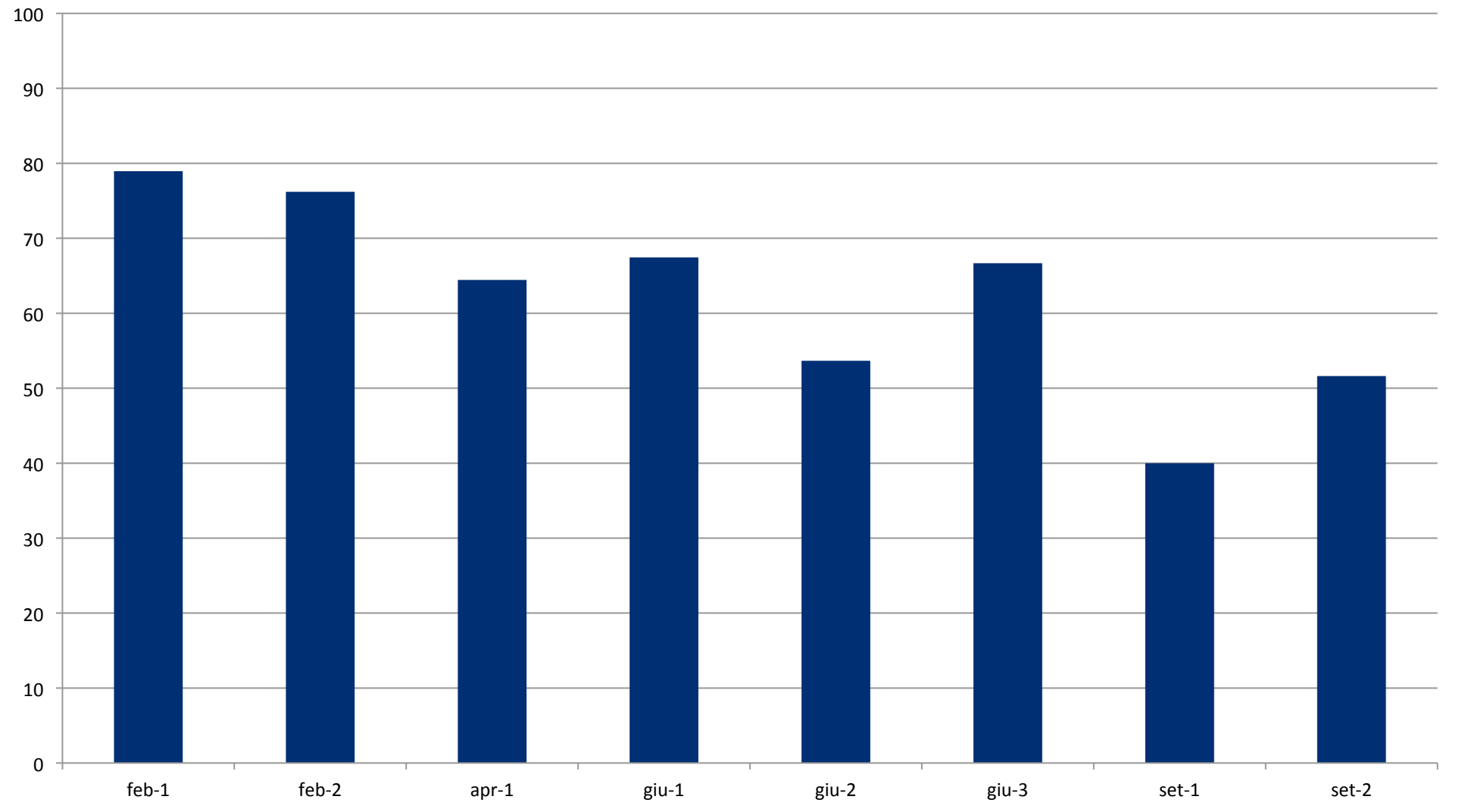
Clinica medica e geriatria



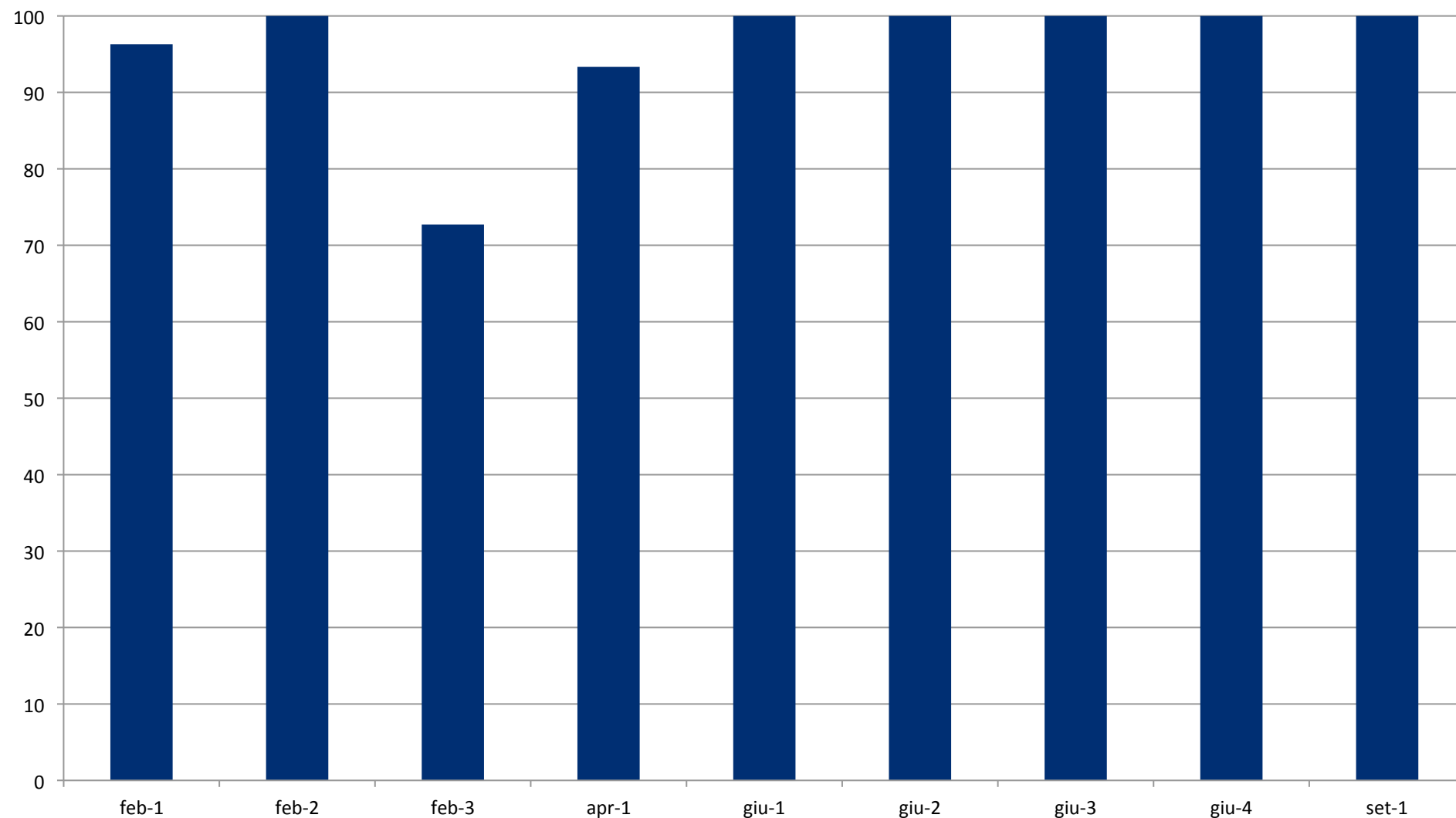
Farmacologia



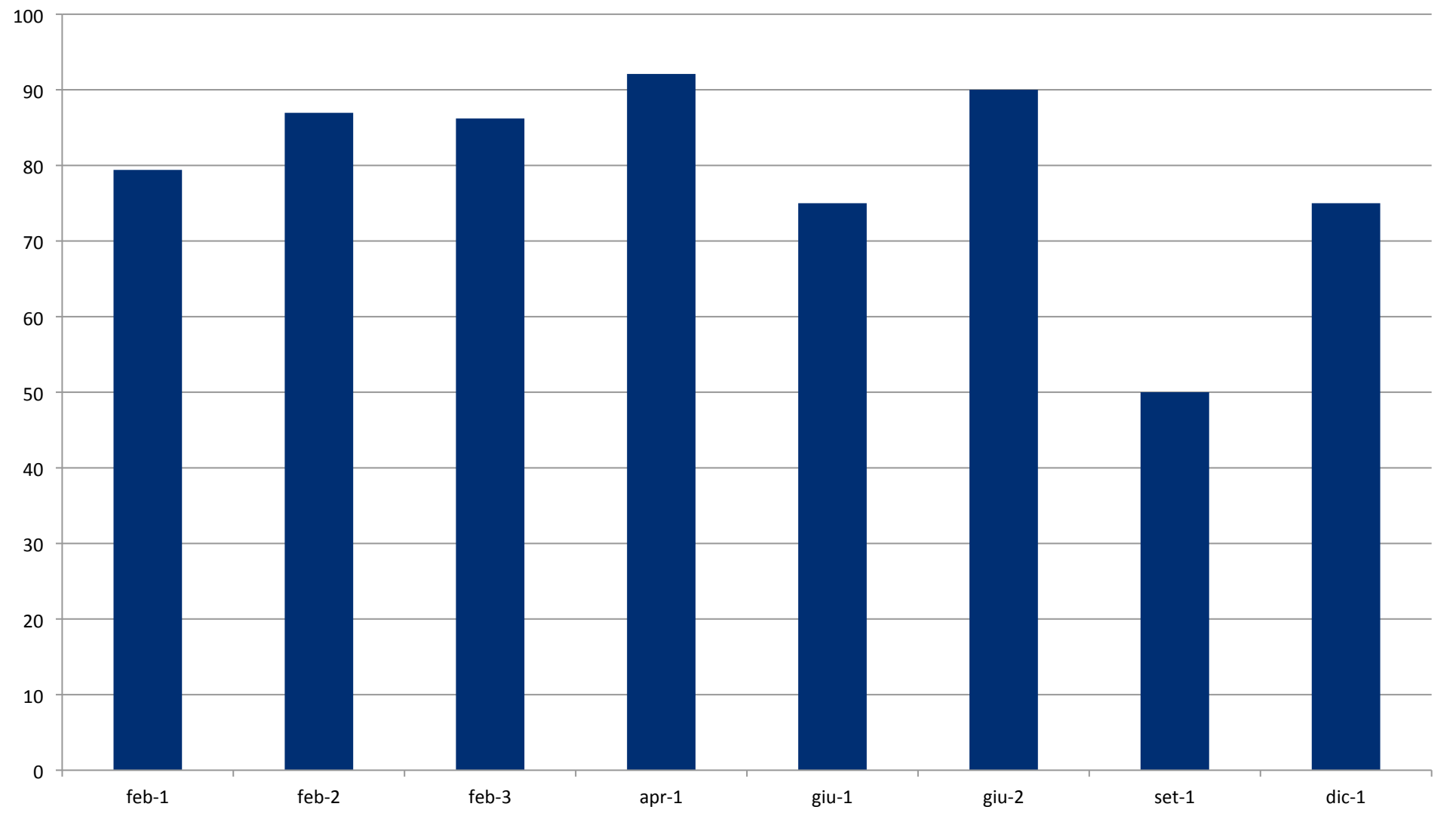
Fisiologia



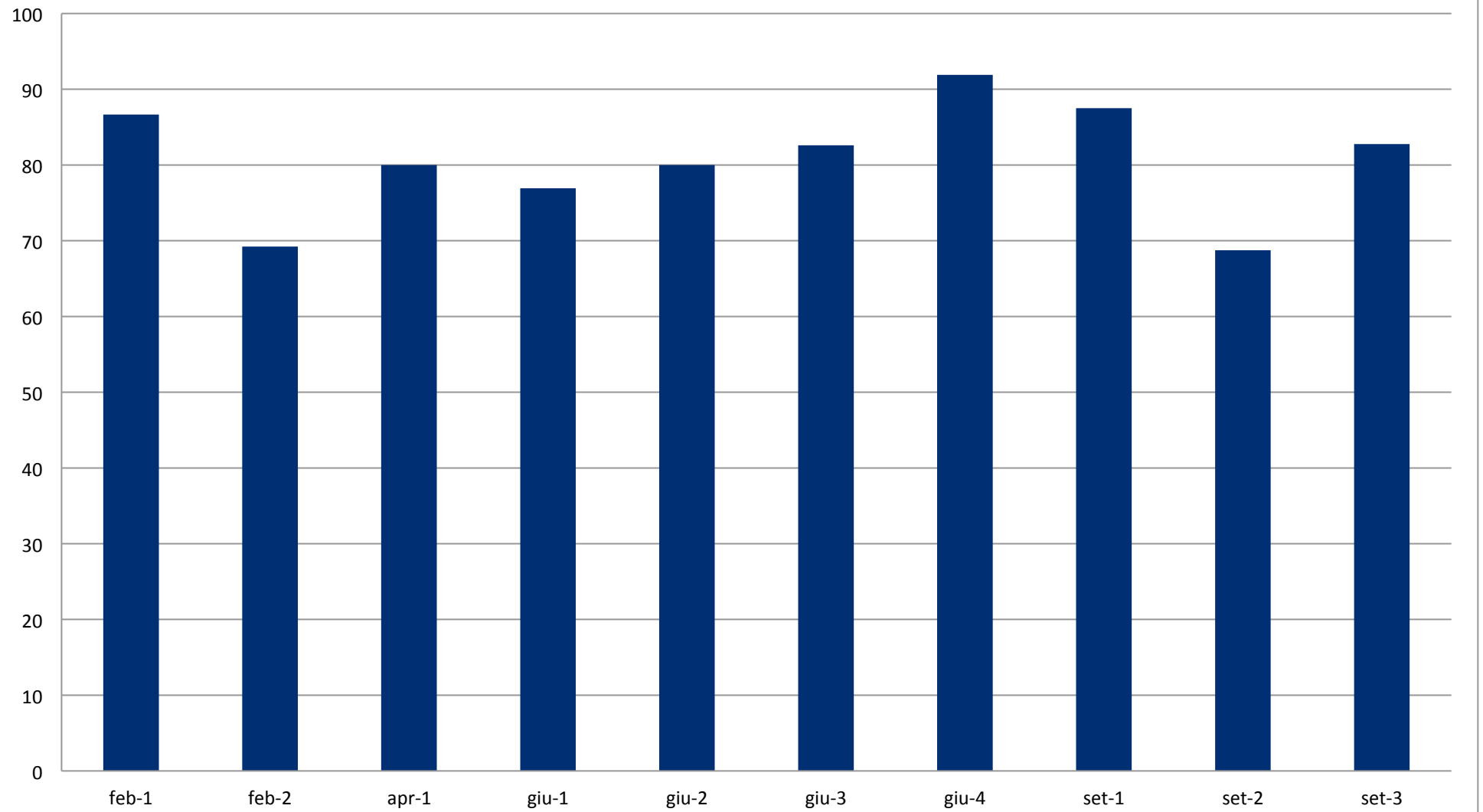
Ginecologia e ostetricia



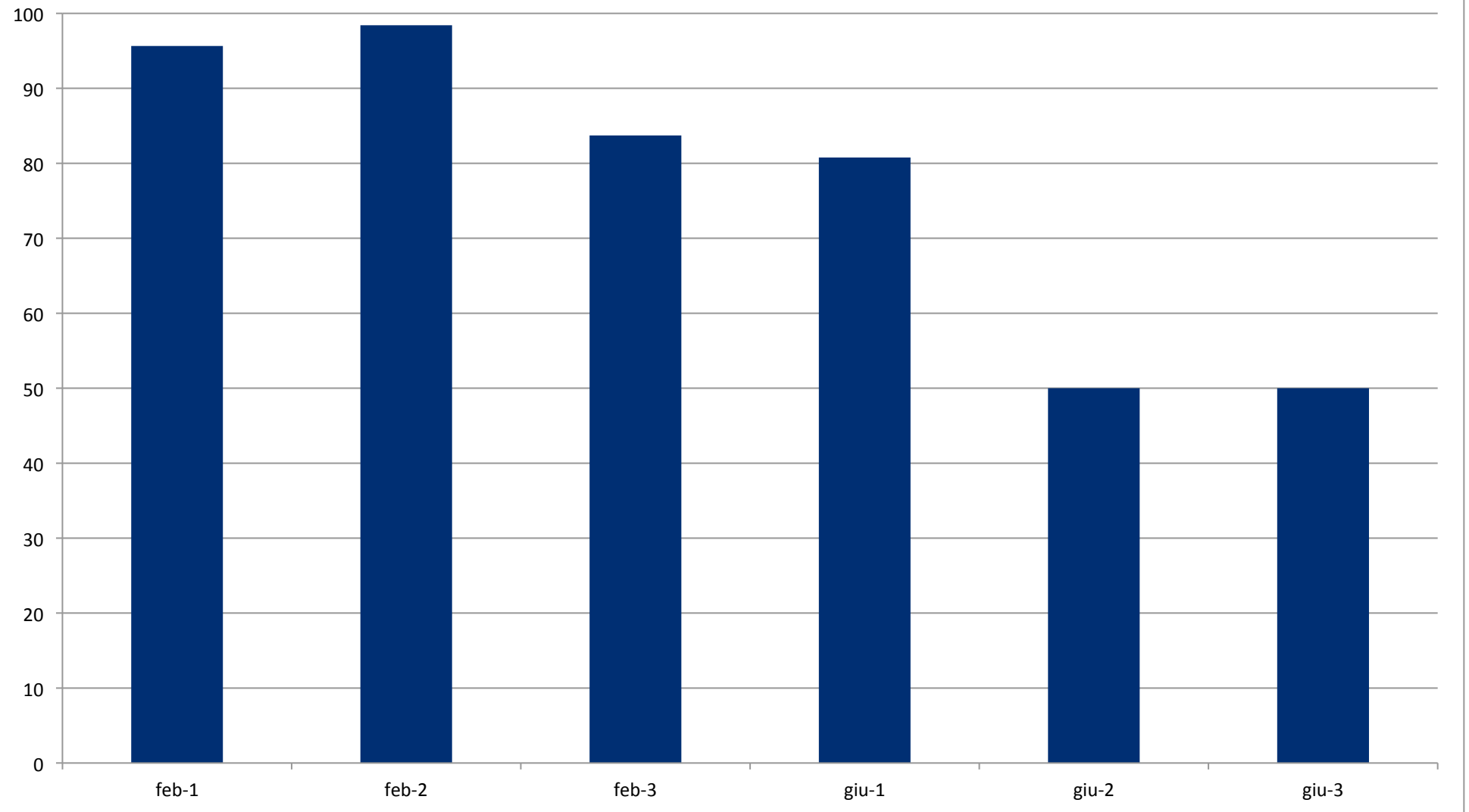
Igiene, sanità pubblica e politiche della salute



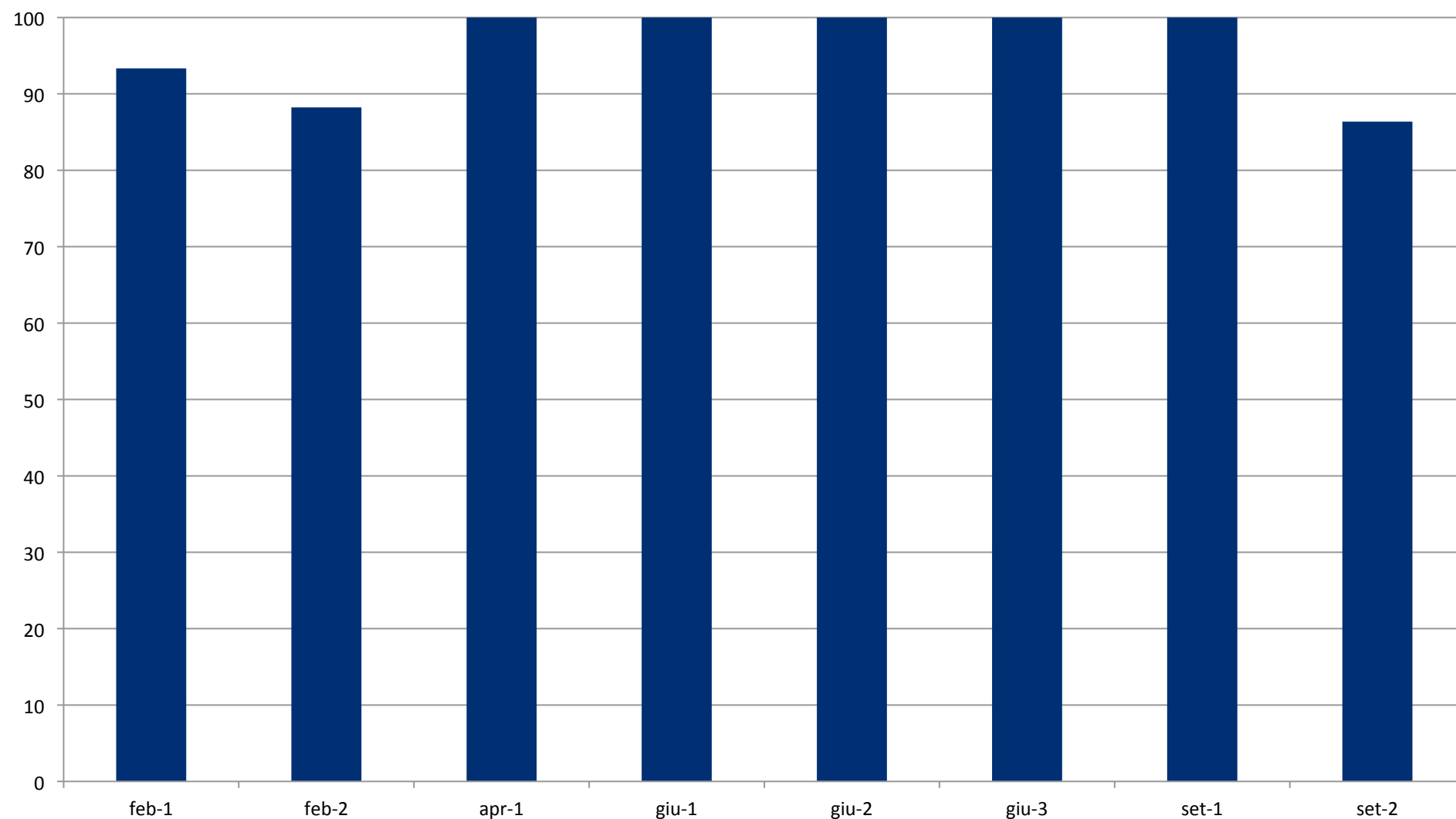
Immunologia



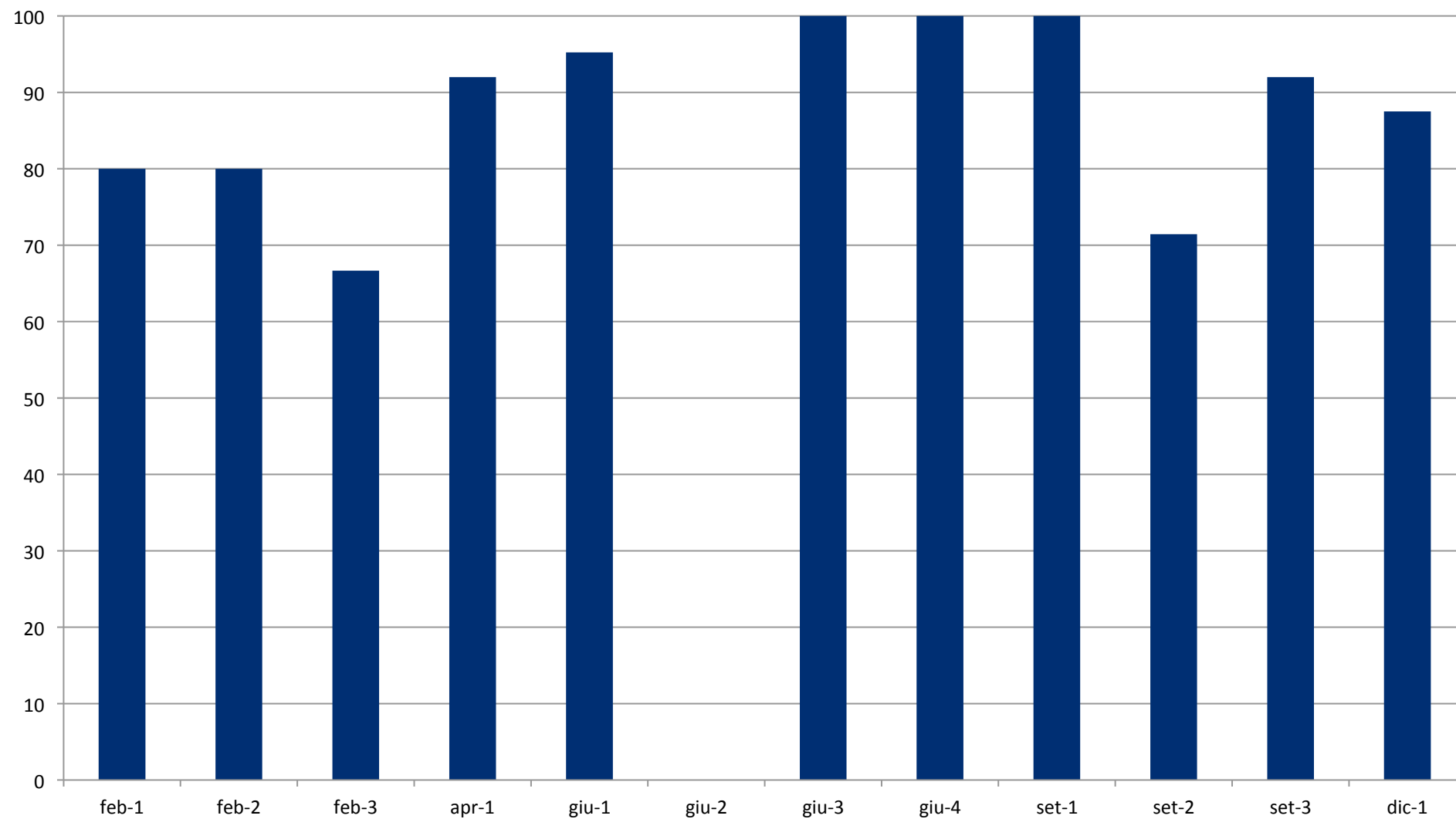
Istologia



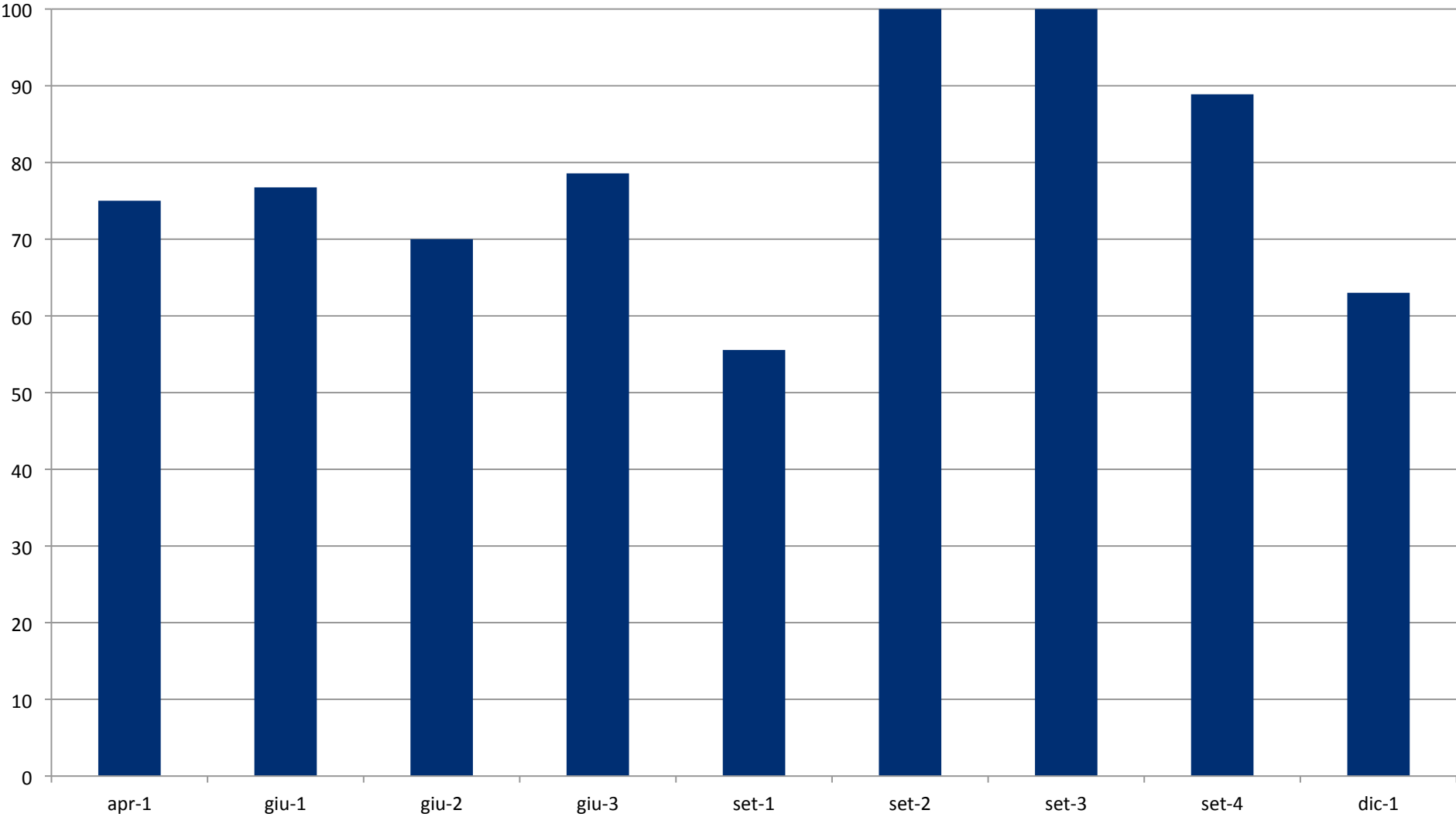
Malattie ematologiche neoplastiche



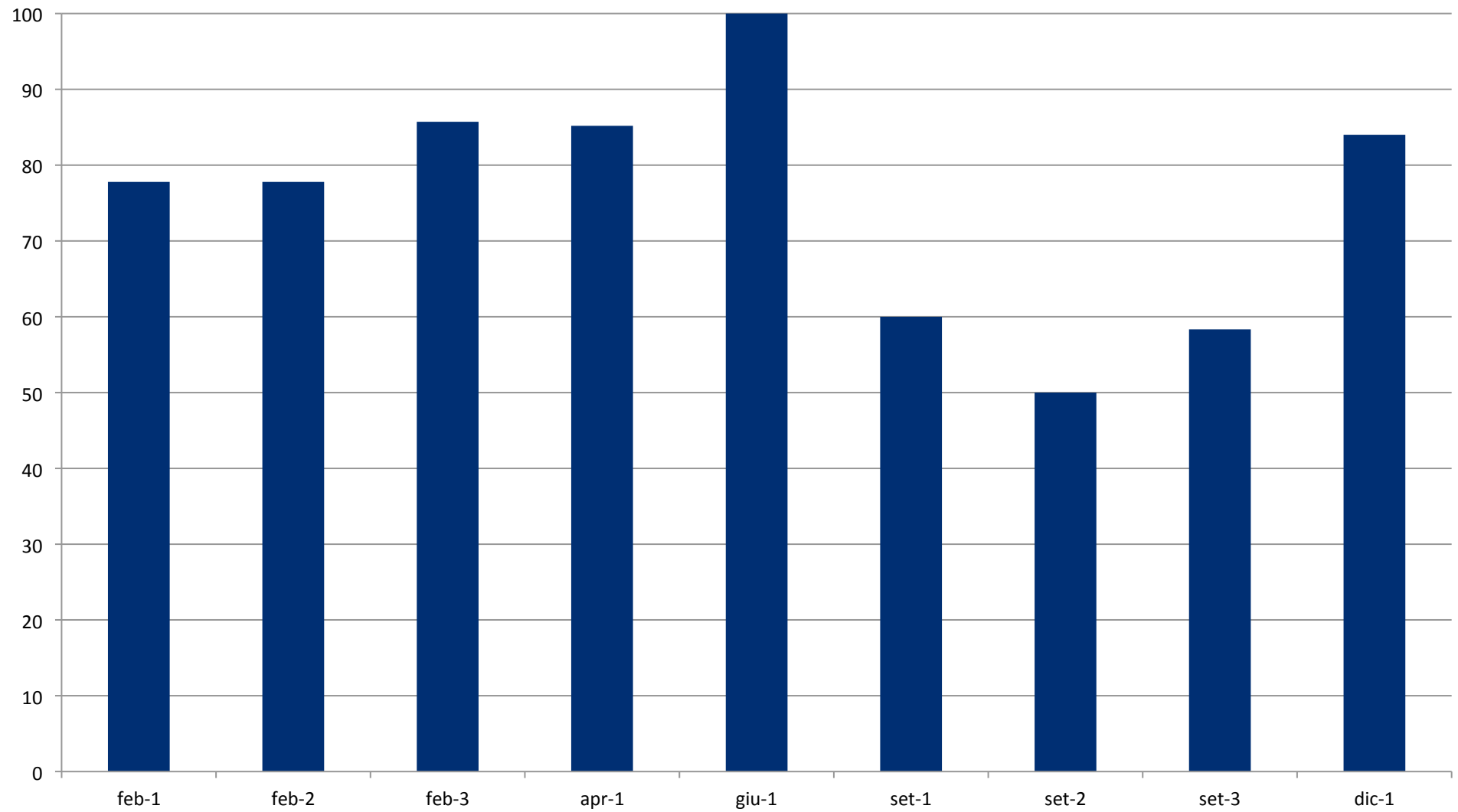
Malattie Respiratorie e Cardiovascolari



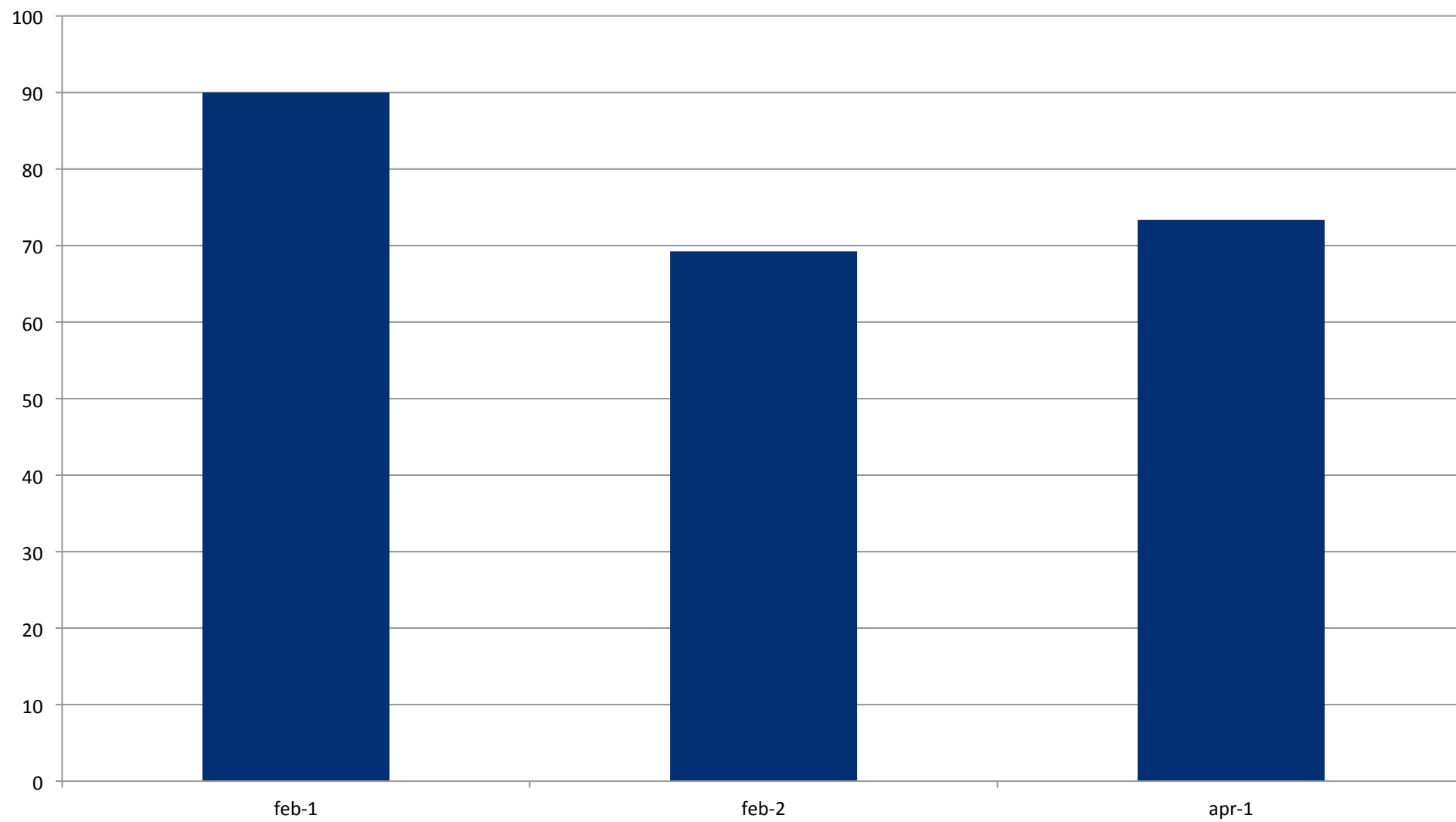
Malattie testa collo



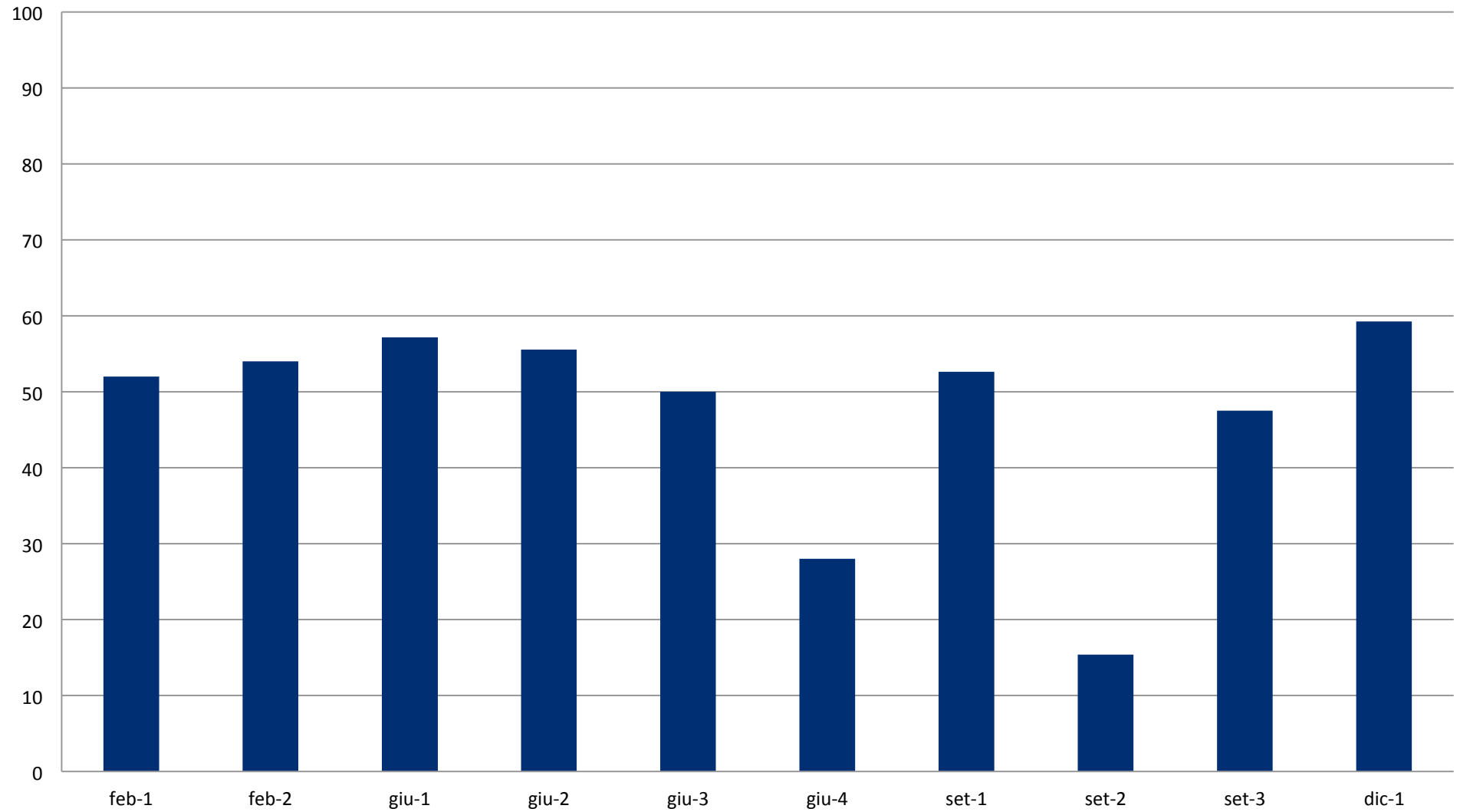
Medicina di laboratorio



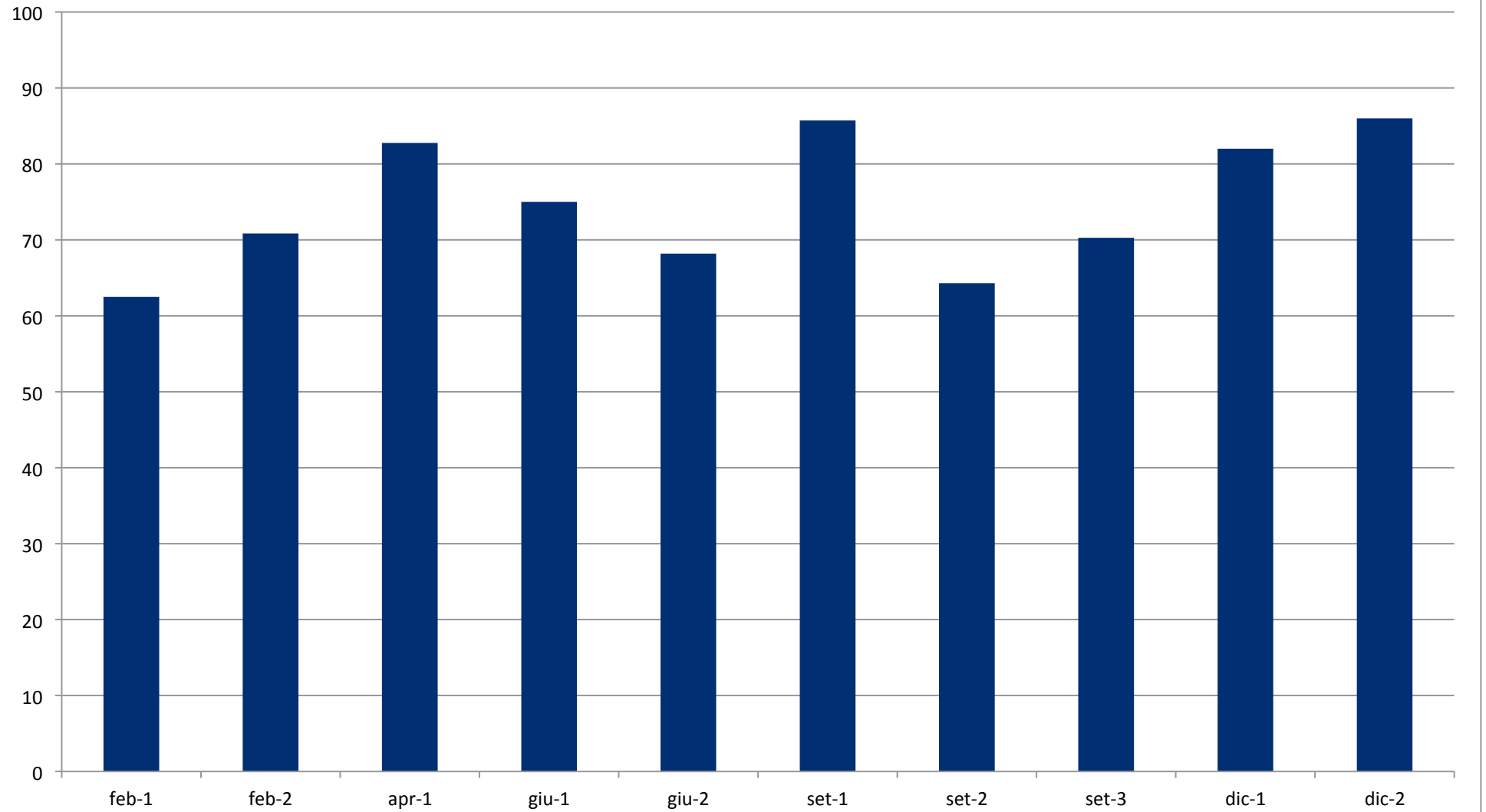
Medicina legale



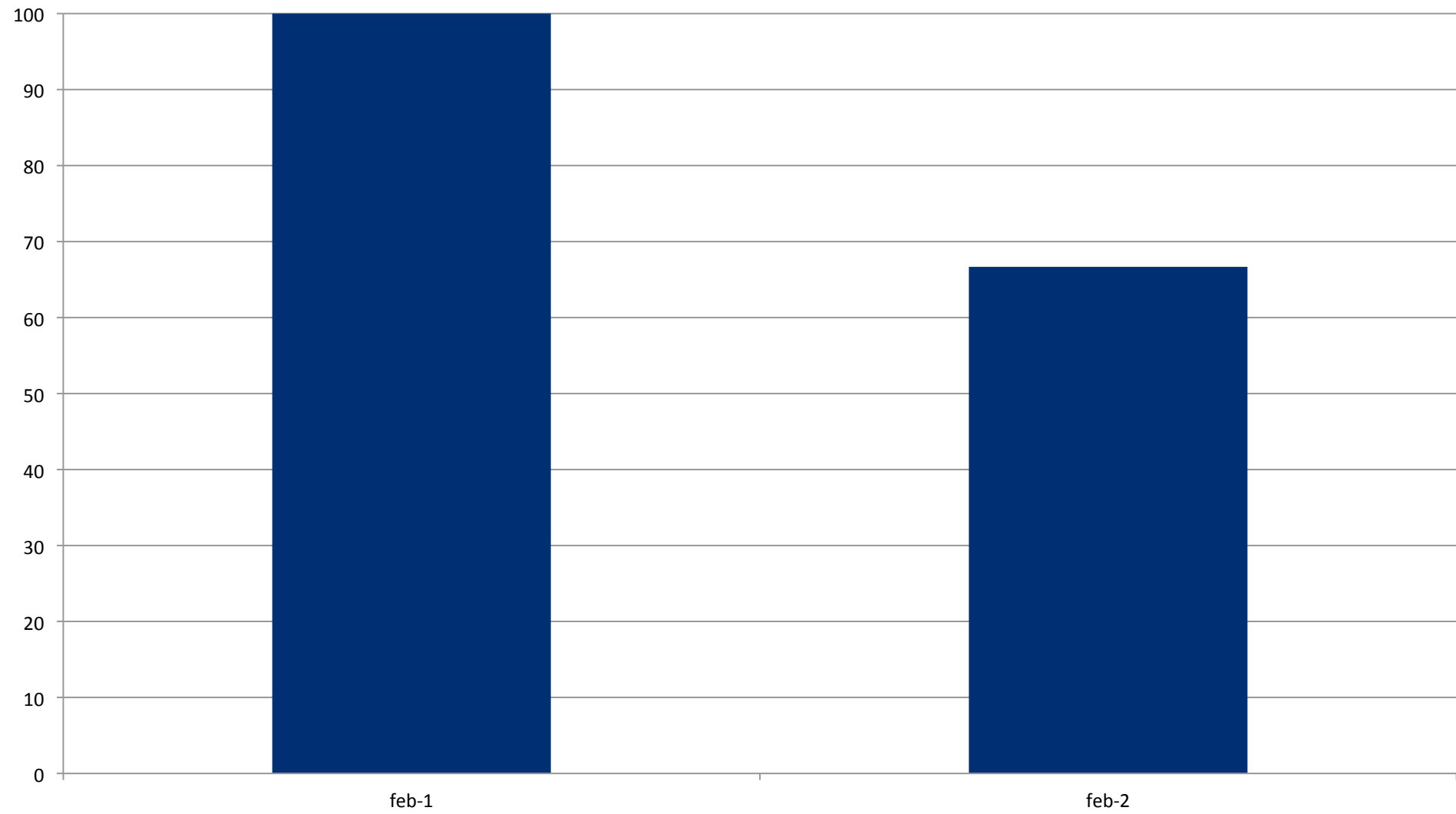
Microbiologia



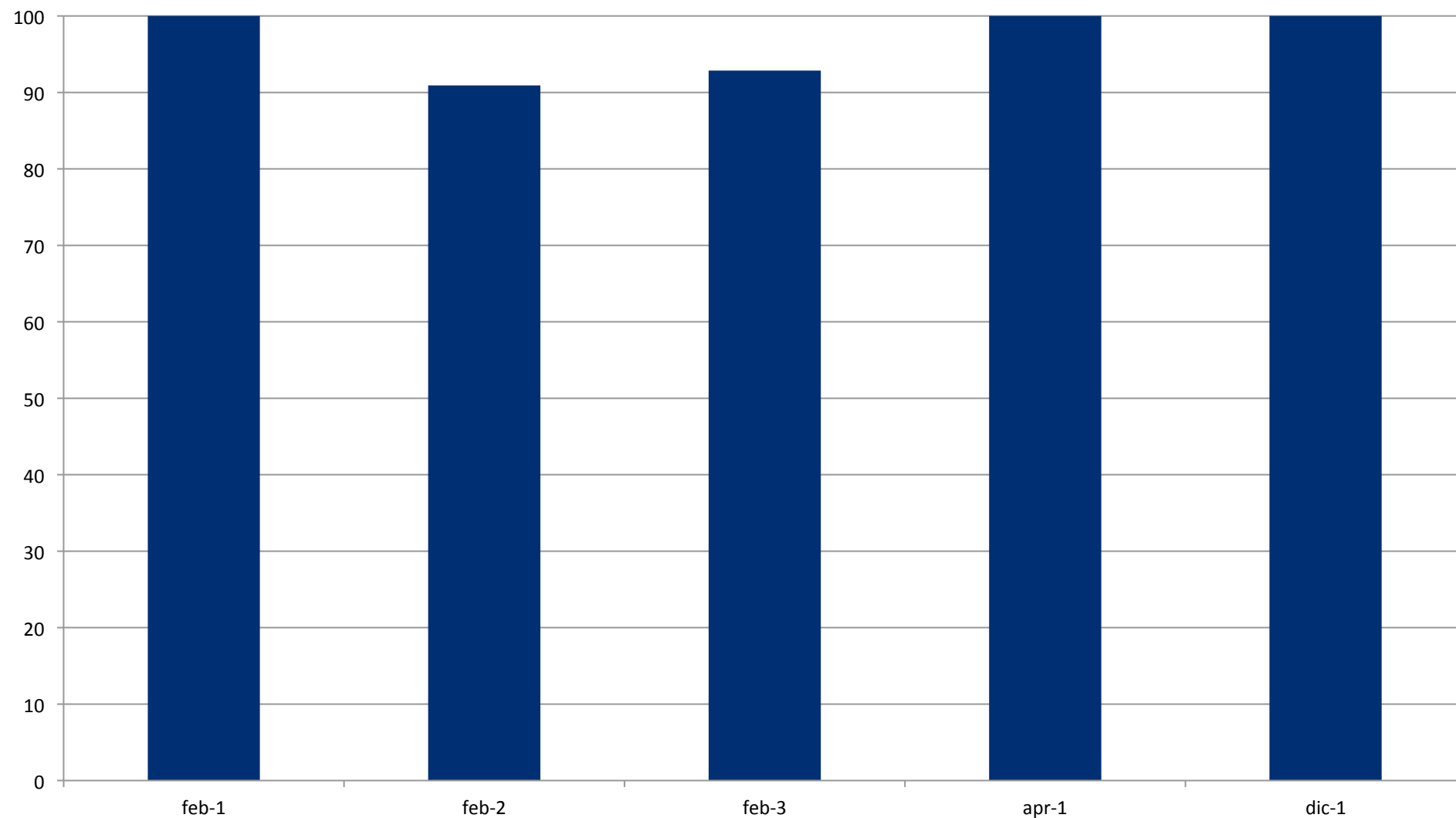
Patologia generale



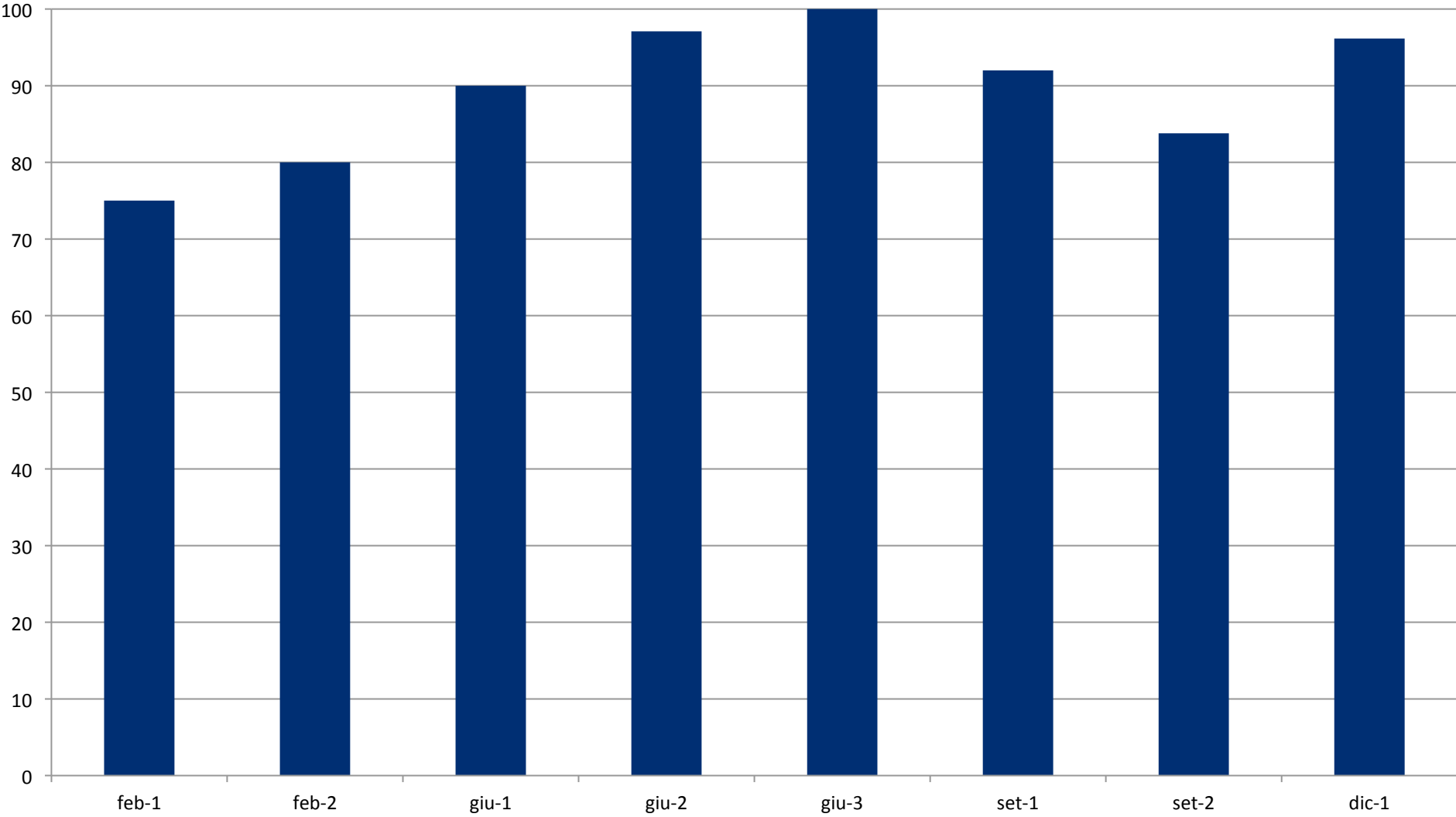
Pediatria



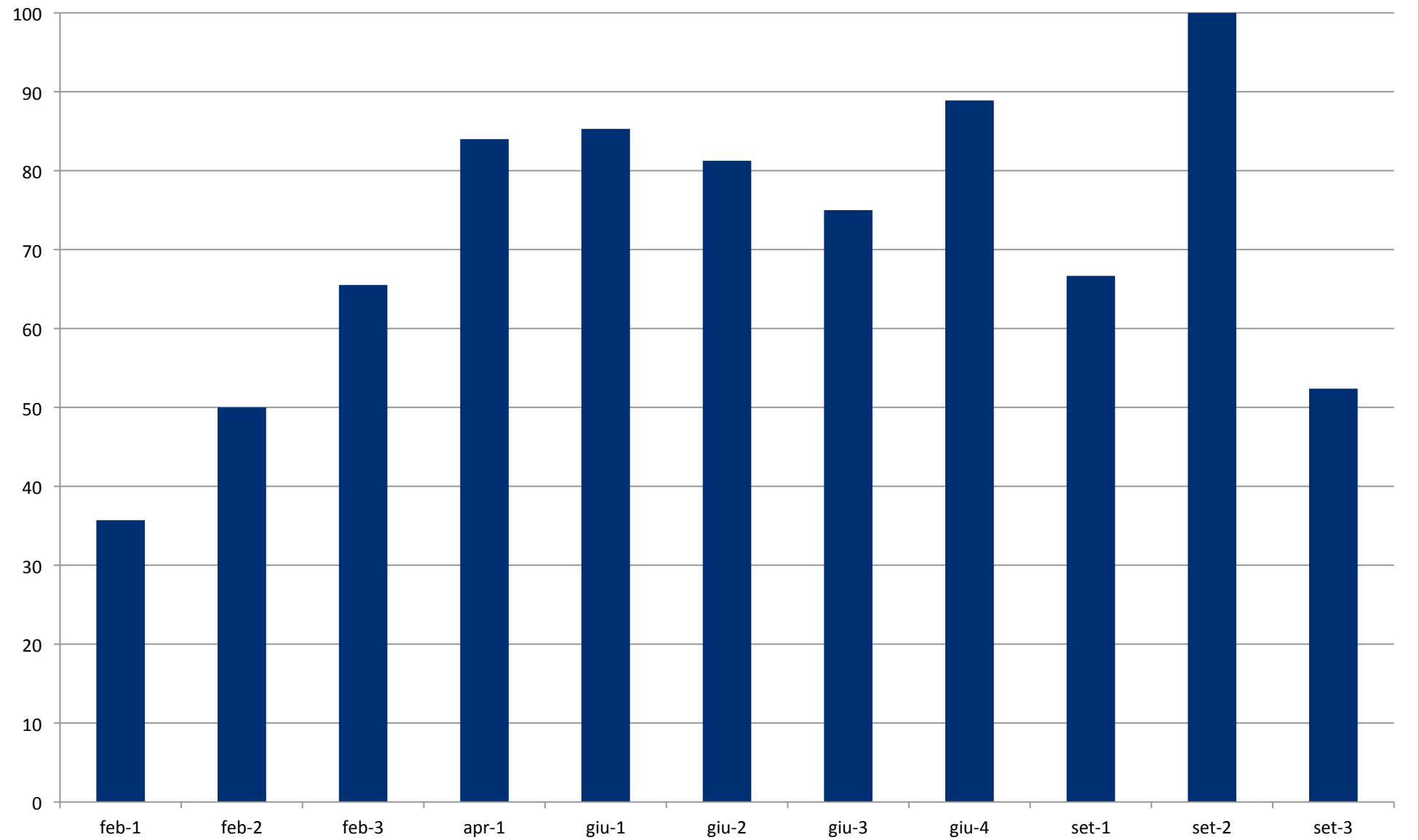
Psichiatria e patologia clinica



Scienze Fisiche



Semeiotica e metodologia clinica



Stili di vita e benessere

